

PLEASE CHECK WWW.MOLEX.COM FOR LATEST PART INFORMATION

Part Number: [1301490013](#)
Status: **Active**
Overview: [Heavy-Duty Industrial Wiring Devices](#)
Description: Safeway Flanged Receptacle, 2 Pole/3 Wire, NEMA 6-20, 250V

Documents:

[Brochure \(PDF\)](#) [RoHS Certificate of Compliance \(PDF\)](#)

Agency Certification

UL E46237

General

Product Family	Wiring Devices
Series	130149
IP Rating	N/A
NEMA Configuration	NEMA 6-20
Overview	Heavy-Duty Industrial Wiring Devices
Product Name	Safeway
Receptacle Type	Single
Specialty	N/A
Taxonomy	Wiring Devices
Type	Receptacle
UPC	78678870316

Physical

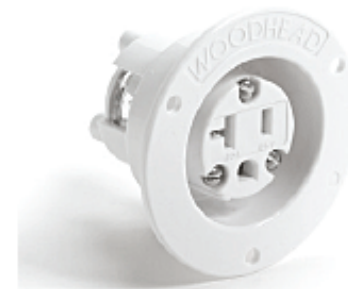
Flange	Yes
Flip Lid	No
Gender	Female
Length	N/A
Locking Blade	No
Poles	2-pole/3-wire

Electrical

Cord Type	N/A
Current - Maximum per Contact	20.0A
GFCI	No
Lighted Connector	No
Voltage - Maximum	250V

Material Info

Engineering Number	1548MB
--------------------	--------



Series image - Reference only

EU ELV

Not Reviewed

EU RoHS

Not Reviewed

REACH SVHC

Not Reviewed

Halogen-Free

Status

Not Reviewed

For more information, please visit [Contact US](#)

China ROHS

Not Reviewed

ELV

Not Reviewed

RoHS Phthalates

Not Reviewed

Search Parts in this Series

[130149 Series](#)

PLEASE CHECK WWW.MOLEX.COM FOR LATEST PART INFORMATION